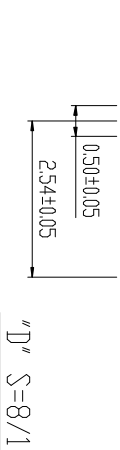
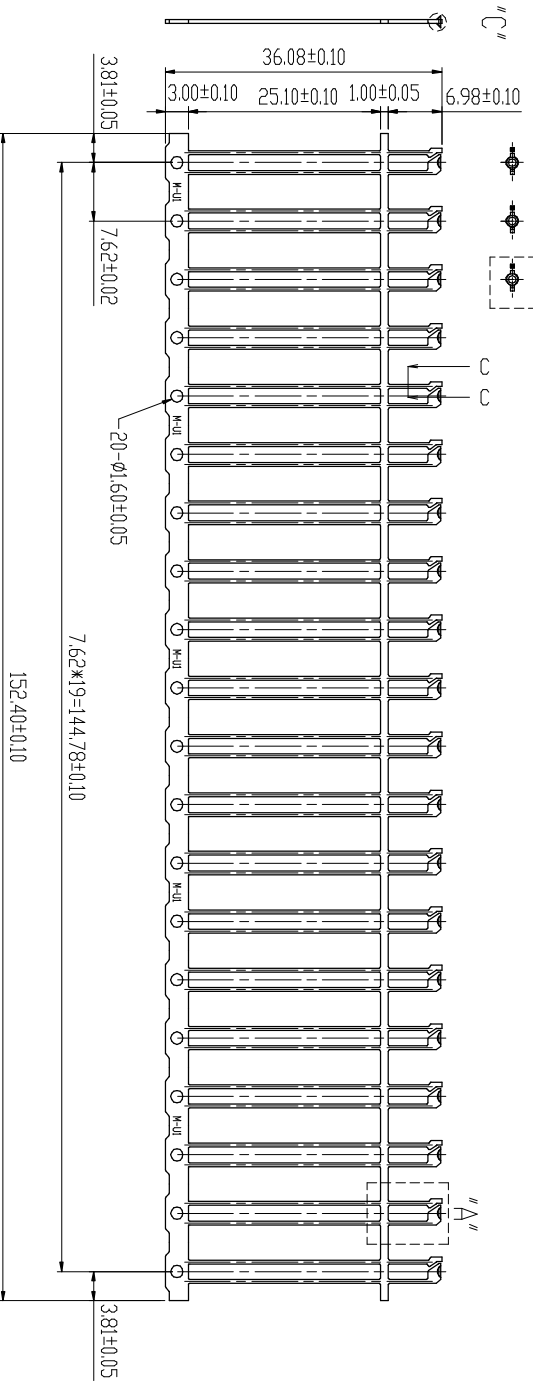
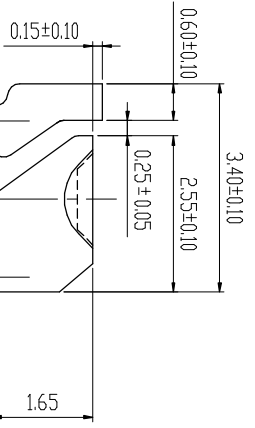
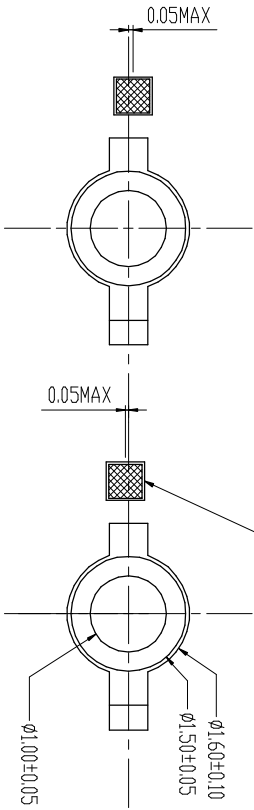
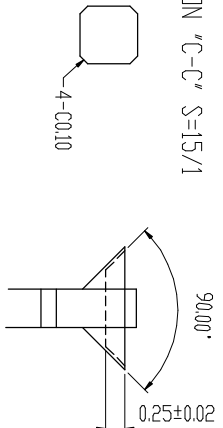


REVISION			
REV	DESCRIPTION	BY	DATE
A	NEW DRAWING	M.S.SU	11/18/03
B	MODIFY P/N	J.S.SHEU	01/02/07

"C" S=10/1

"B" S=10/1

SCATION "C-C" S=15/1



"D" S=8/1

- NOTE:
1. MATERIAL: 0.50±0.025 THICK SPEC-SD.
  2. BURR: 0.05MAX. UNLESS OTHERWISE SPECIFIED.
  3. RADIUS: 0.30 MAX. ON ALL SHARP CORNERS UNLESS OTHERWISE SPECIFIED.
  4. BDW: NOT TO EXCEED 0.50 IN A 20 FRAME STRIP.
  5. CROSS BDW: NOT TO EXCEED 0.20 TO 36.08 WIDTH.
  6. TWIST: 0.50 MAX. IN A FRAME STRIP.
  7. CAMBER: LESS THAN 0.10 WHEN MEASURE OVER 20 POSITIONS.
  8. TWISTING ANGLE: ±2° MAX. OF THE BDW.
  9. TOLERANCE: IS ±0.10 UNLESS OTHERWISE SPECIFIED.

D1800004 UNPLATING REEL		DR	DATE	MAT'L
ANGLES 0°±20'		J.S.SHEU	01/02/07	SEE NOTE 1
MM	0.0±0.13	CHK	J.S.SHEU	01/02/07
	0.00±0.05	ENGR		SEE NOTE 2
	0.000±0.03	APPD		DWG. NO. M0344

TITLE			REV
CHAIN PRECISION INDUSTRIAL CO., LTD.			B
SCALE	SIZE	PART. NO.	REV
1:1	A4	E0344-D18XXXXA	B
2003M-U1			SHT 1 OF 1