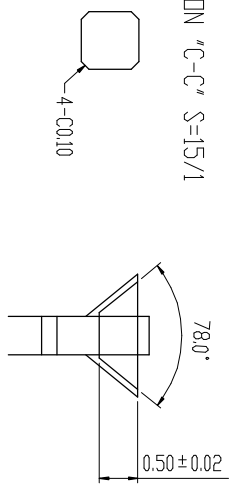


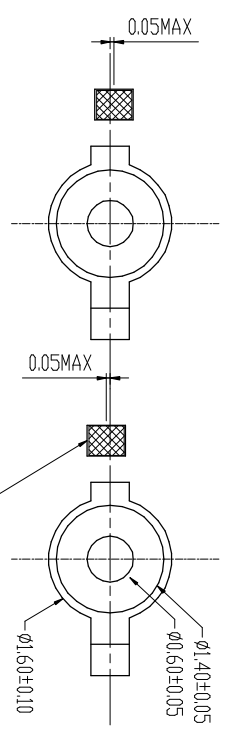
A B C D E F G H I

SCATION "C-C" S=15/1

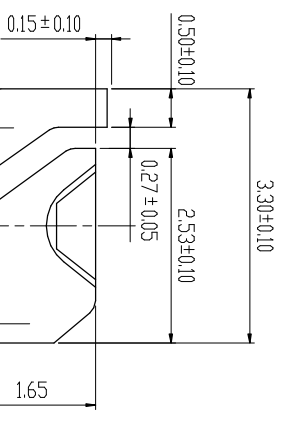
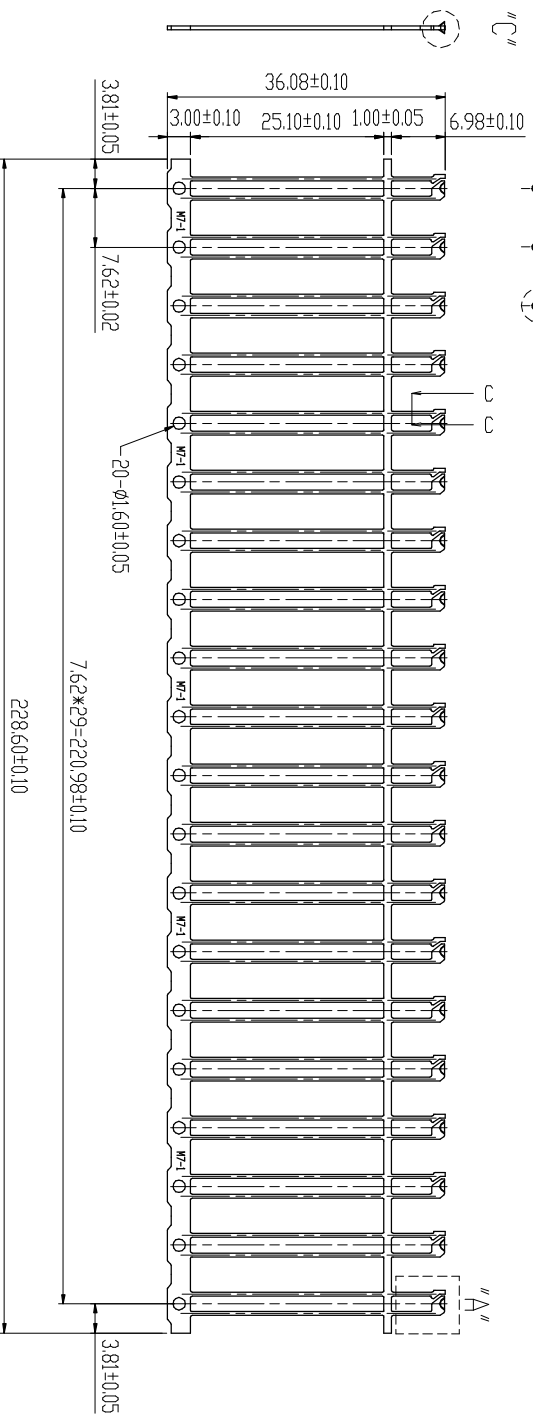
"C" S=10/1



"B" S=10/1



REVISION			
REV	DESCRIPTION	BY	DATE
A	NEW DRAWING	MS.SU	10/24/03
B	MODIFY P/N	J.S.SHEU	01/02/07
C	ECN.0706-008	J.S.SHEU	06/16/07



"A" S=10/1

- NOTE:
1. MATERIAL: 0.50±0.025 THICK SPCC-SH.
 2. BURR: 0.05MAX. UNLESS OTHERWISE SPECIFIED.
 3. RADIUS: 0.30 MAX. ON ALL SHARP CORNERS UNLESS OTHERWISE SPECIFIED.
 4. BOW: NOT TO EXCEED 0.50 IN A 30 FRAME STRIP.
 5. CROSS BOW: NOT TO EXCEED 0.20 TO 36.08 WIDTH.
 6. TWIST: 0.50 MAX. IN A FRAME STRIP.
 7. CAMBER: LESS THAN 0.10 WHEN MEASURE OVER 30 POSITIONS.
 8. TWISTING ANGLE: ±2° MAX. OF THE BOWL.
 9. TOLERANCE: IS ±0.10 UNLESS OTHERWISE SPECIFIED.

F180000A	UNPLATING REEL
F186000A	AG±80u"/F50u" REEL
F186020A	AG±80u"/F50u".30PIN

ANGLES 0°±20°		DR	DATE	MAT'L
M/V	J.S.SHEU	06/16/07	SEE NOTE 1	
0.0±0.13	CHK J.S.SHEU	06/16/07	FINISH SEE NOTE 2	
0.00±0.05	ENGR		DWG. NO. M0344	
0.000±0.03	APPD			

CHAIN PRECISION INDUSTRIAL CO., LTD.

TITLE 2003M7-1

SCALE 1:1 SIZE A4 PART. NO. E0344-F18XXXXXA REV C

A B C D E F G H I

6 5 4 3 2 1