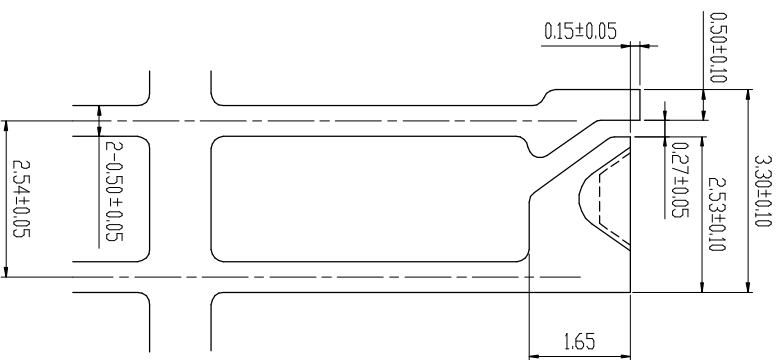
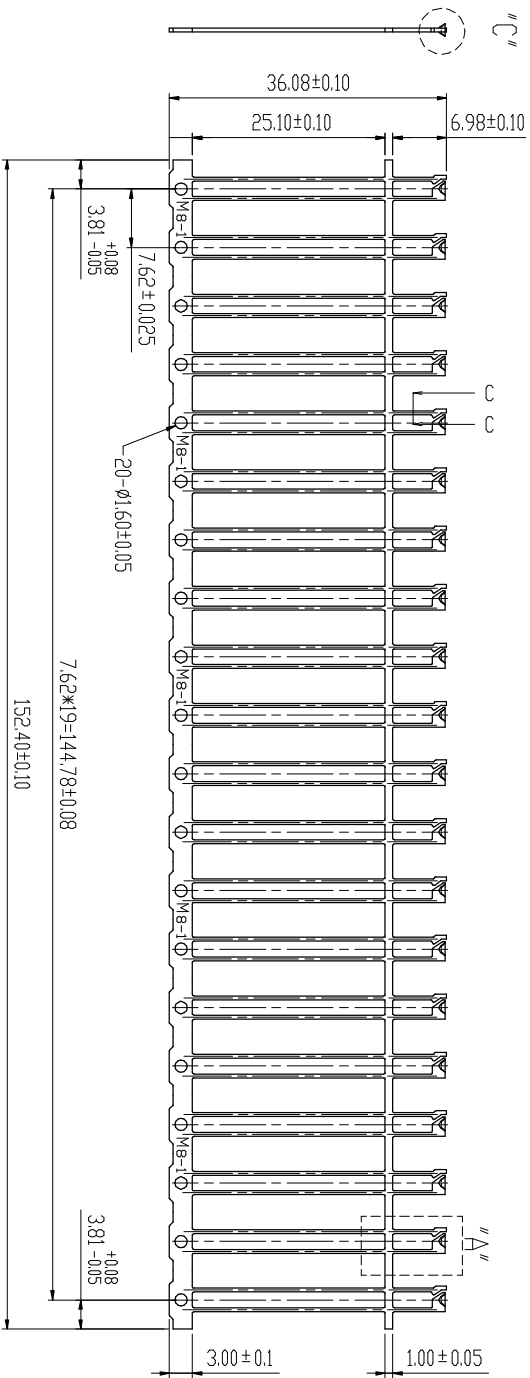
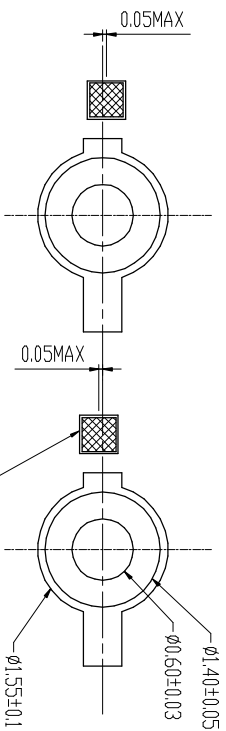
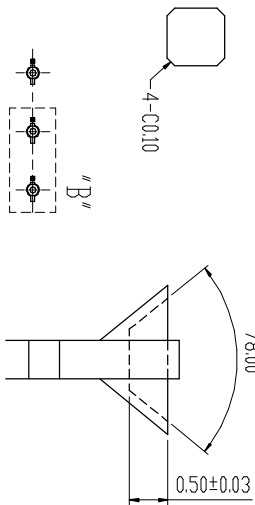


REVISION			
REV	DESCRIPTION	BY	DATE
A	NEW DRAWING	J.S.SHEU	04/11/06
B	MODIFY P/N	J.S.SHEU	01/02/07

SCATION "C-C" S=15/1

"C" S=10/1

"B" S=10/1



- NOTE:
1. MATERIAL: 0.50±0.025 THICK SPCC-SD.
  2. BURR: 0.05MAX. UNLESS OTHERWISE SPECIFIED.
  3. RADIUS: 0.30 MAX. ON ALL SHARP CORNER UNLESS OTHERWISE SPECIFIED.
  4. BDW: NOT TO EXCEED 0.50 IN A 20 FRAME STRIP.
  5. CROSS BDW: NOT TO EXCEED 0.20 TO 36.08 WIDTH.
  6. TWIST: 0.50 MAX. IN A FRAME STRIP.
  7. CAMBER: LESS THAN 0.10 WHEN MEASURE OVER 20 POSITIONS.
  8. TWISTING ANGLE: ±2° MAX. OF THE BDWL.
  9. TOLERANCE: IS ±0.10 UNLESS OTHERWISE SPECIFIED.

B280000A	UNPLATING REEL
B286000A	AGL80U*/T50U* REEL
B286C20A	AGL80U*/T50U* 20PIN

ANGLES 0°±2'0"		MM	DR	CHK	DATE	MAT'L
		0.0±0.13	J.S.SHEU	01/02/07	SEE NOTE 1	
		0.00±0.05	J.S.SHEU	01/02/07	FINISH	SEE NOTE 2
		0.000±0.03	APPD		DWG. NO.	M05041

CHAIN PRECISION INDUSTRIAL CO., LTD.

TITLE 2003M8-1

REV B

SCALE 1:1 SIZE A4 PART NO. E05041-B28XXXXA SH1 OF 1