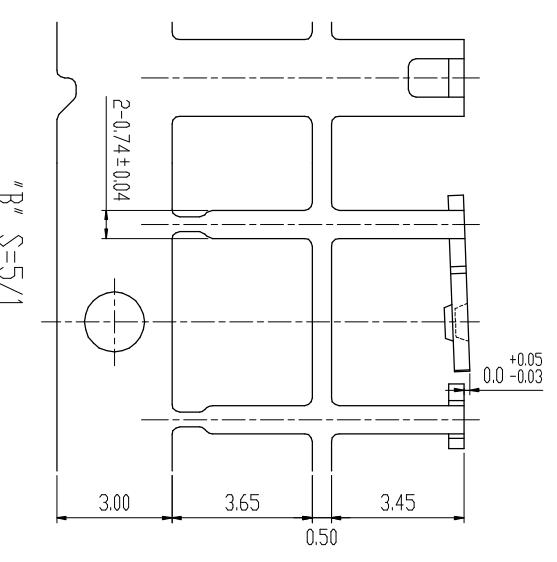
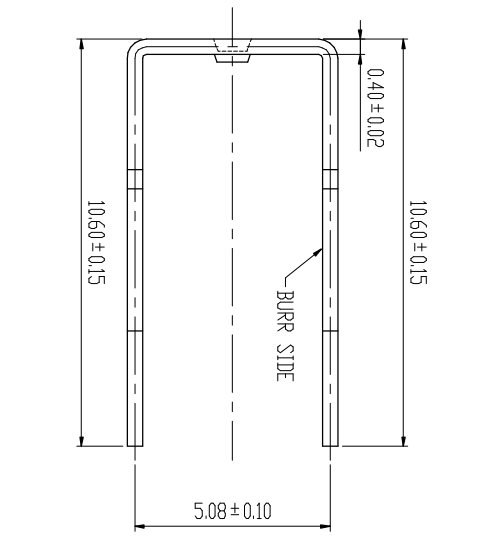
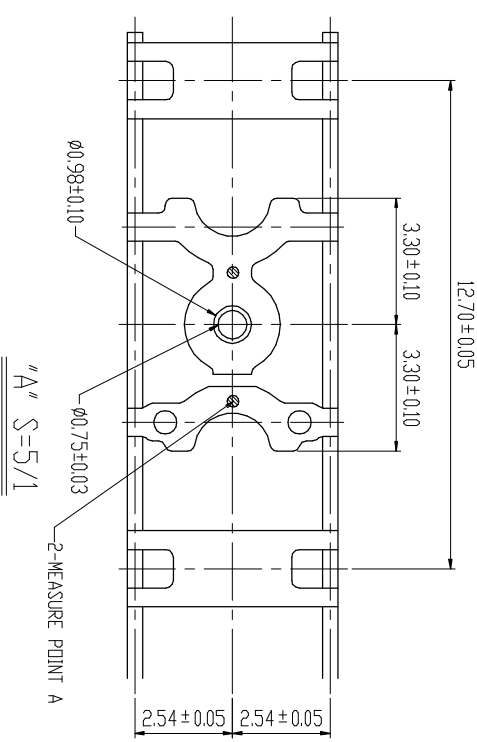
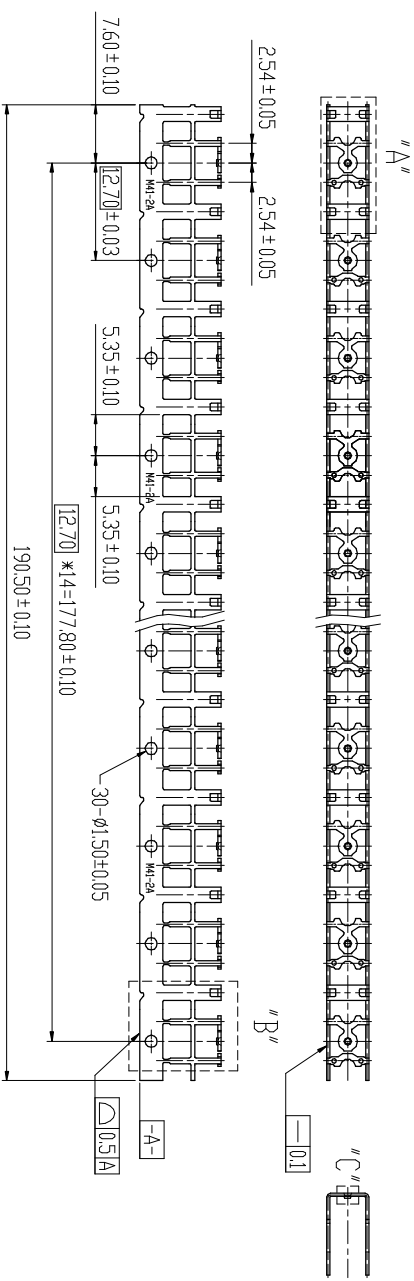


UNPLATING REEL	PLATING	PART NO.	DESCRIPTION		PIECE
			UNDERPLATING	A Point	
A2600000A	A2660015A	A2660U15A	CU 20u"~30u"	AG 80u"	1SPIN
A2600000A	A2661015A	A2661U15A	CU 20u"~30u"	AG 120u"	1SPIN

REVISION			
REV	DESCRIPTION	BY	DATE
A	NEW DRAWING	J.S.SHEU	02/13/09
B	ECN 1007-005	JDE	07/06/10
C	ECN1011-001	Ted	11/04/10



- NOTE:
1. MATERIAL: 0.40±0.02 THICK COPPER ALLOY-194 1/2H.
  2. PLATING OF NONE MEASURING POINT FOR TABLE : AG 30u" MIN.
  3. RADIUS: 0.30 MAX. ON ALL SHARP CORNERS UNLESS OTHERWISE SPECIFIED.
  4. BURR: 0.03 MAX. UNLESS OTHERWISE SPECIFIED.
  5. CAN NOT BE DISCARDER AFTER BY 170° BAKING FOR 15 HOURS.

ANGLES 0°±20°	MM	DR	DATE	MAT'L
0.0±0.13	CHK	Ted	11/04/10	SEE NOTE 1
0.00±0.05	ENGR	Ted	11/04/10	FINISH SEE PART NO. TABLE
0.000±0.03	APPD			DWG. NO. M0346

CHALIN PRECISION INDUSTRIAL CO., LTD.			
DWG TYPE	TITLE	SCALE	SIZE
C	2041-M41-2AU	1:1	A4
REV	PART NO.	E03046-A266XU15A	
C		SHT 1 OF 2	