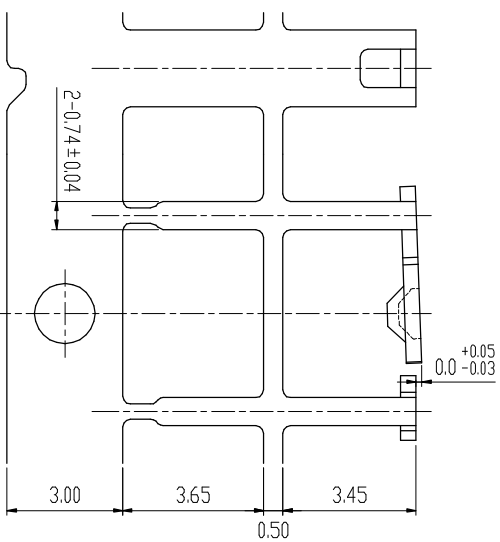
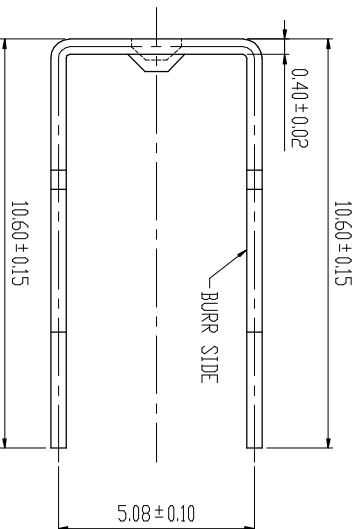
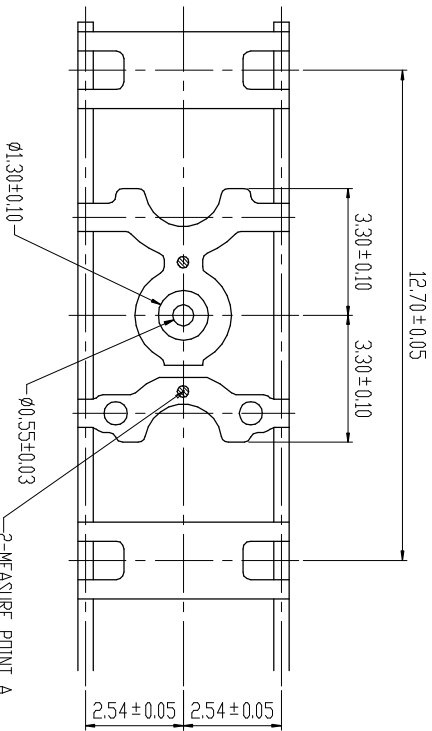
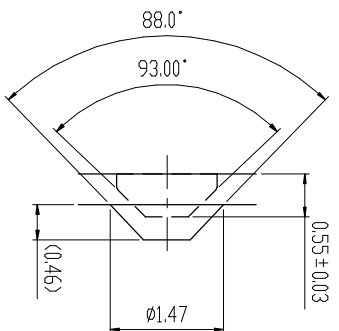
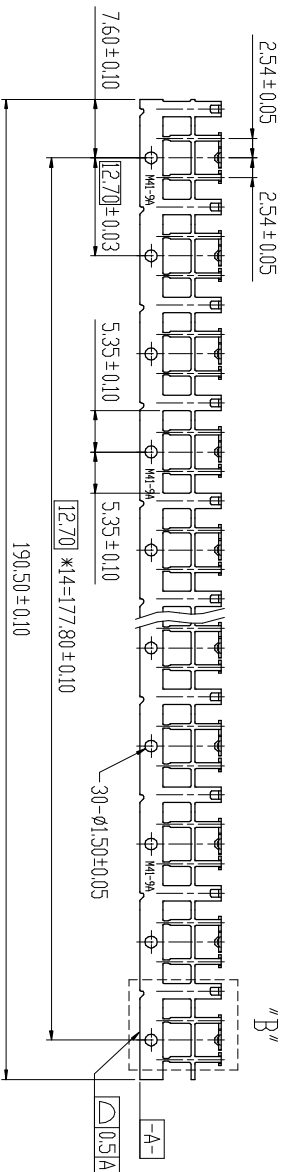
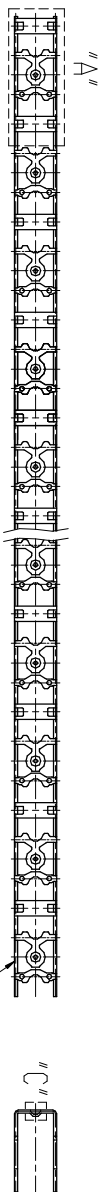


UNPLATING REEL	PLATING	PART NO.	DESCRIPTION		PIECE
A966000004	A9660015A	A9660015A	UNDERPLATING	A Point B Point	15PIN
			CU 20u~30u	AG 80u	

REVISION			
REV	DESCRIPTION	BY	DATE
A	NEW DRAWING	J.S.SHEU	02/13/09
B	EN 1007-005	JOE	07/06/10
C	E0N1011-001	td	11/04/10



"A" S=5/1

"B" S=5/1

"C" S=10/1

- NOTE:
1. MATERIAL: 0.40±0.02 THICK COPPER ALLOY-194 1/2H.
  2. PLATING OF NONE MEASURING POINT FOR TABLE : AG 30u" MIN.
  3. RADIUS: 0.30 MAX. ON ALL SHARP CORNERS UNLESS OTHERWISE SPECIFIED.
  4. BURR: 0.03 MAX. UNLESS OTHERWISE SPECIFIED.
  5. CAN NOT BE DISCOLOR AFTER BY 170° BAKING FOR 15 HOURS.

ANGLES 0°±20°		MM	DR	DATE	MAT'L
	0.0±0.13	Ted	11/04/10'	SEE NOTE 1	
	0.00±0.05	Ted	11/04/10'	FINISH SEE PART NO. TABLE	
	0.000±0.03	APPD		DWG. NO. M0346	

CHAIN PRECISION INDUSTRIAL CO., LTD.			
SCALE	SIZE	PART NO.	REV
1:1	A4	2041-M41-9AU	C
DWG TYPE		TITLE	REV
C		2041-M41-9AU	C
SCALE		PART NO.	REV
1:1		E03046-A966XU15A	SHT 1 OF 2